

DWR VIZAG CYCLONE BULLETIN

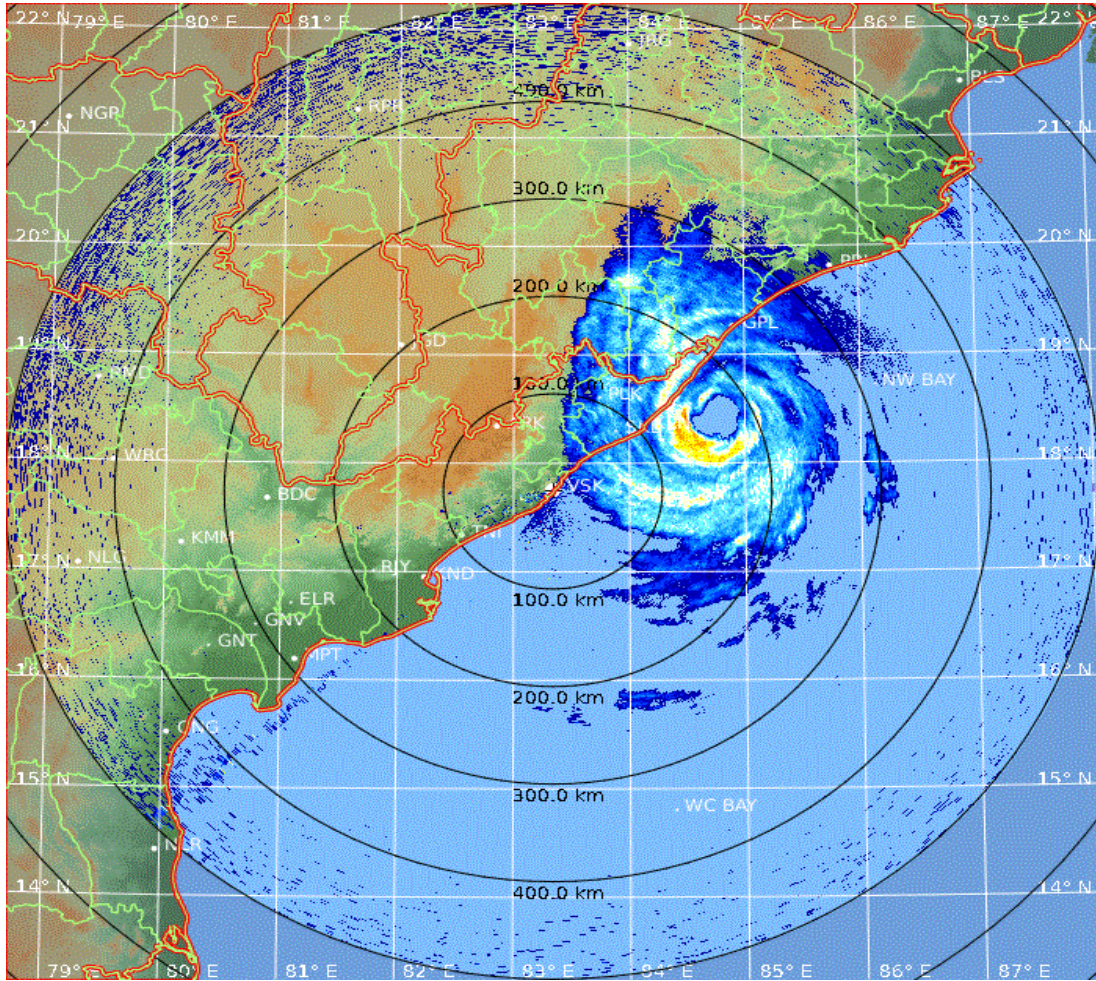
CYCLONE BULLETIN NO: 19

CYCLONE TITLI

TIME: 11/10/2018 0230IST

1.	Name of the station	DWR VSK
2.	Date and Time of Observation (UTC)	20:30UTC 10/10/2018
3.	Name of the Cyclone	TITLI
4.	Information about the eye of the Cyclone	
	a. Is the Eye Visible	VISIBLE
	b. Shape of the Eye	CIRCLE
	c. Diameter of the Eye(km)	45 KMS
	d. Estimation of centre of the cyclone based on Eye/spiral band observation	18.44N 84.74E Azi 63.7/ Dist 170.7KMS(From Radar VSK)
	e. Echo top (height 20 dBZ level) of rain bearing clouds around the cyclone within 100 Km radius (km)	10 Km
	f. Maximum radar reflectivity (dBZ) & rainfall rate (mm/h) in the eye wall/spiral band region, its height (km) and position (azimuth and distance from the radar)	50 DBZ/ 3.7 kms(height)/142kms
	g. Maximum reflectivity at any other area (spiral/ streamers etc)	-
	h. Maximum radial velocity in eye wall/spiral band region (mps), its height (km) and its position (azimuth and distance from the Radar)	162kmph/ 87 knts/ 45m/s 165kms from Radar/ Height of 2.2kms
	i. Maximum velocity in any other area (spiral / streamers / rain shields etc)	-
5.	Tendency of the Cyclone	
	a. Intensity(Increasing/Decreasing)	Same
	b. Duration for which the information on movement pertains to	Past 30 minutes
	c. Direction of Movement	Northwestward
	d. Estimated speed of Movement	8 kmph
6.	Any other Significant Feature	Eye-wall over North Andhra coast likely to cross around Palasa,AP 98 kms South of Gopalpur
7.	Confidence	Fair

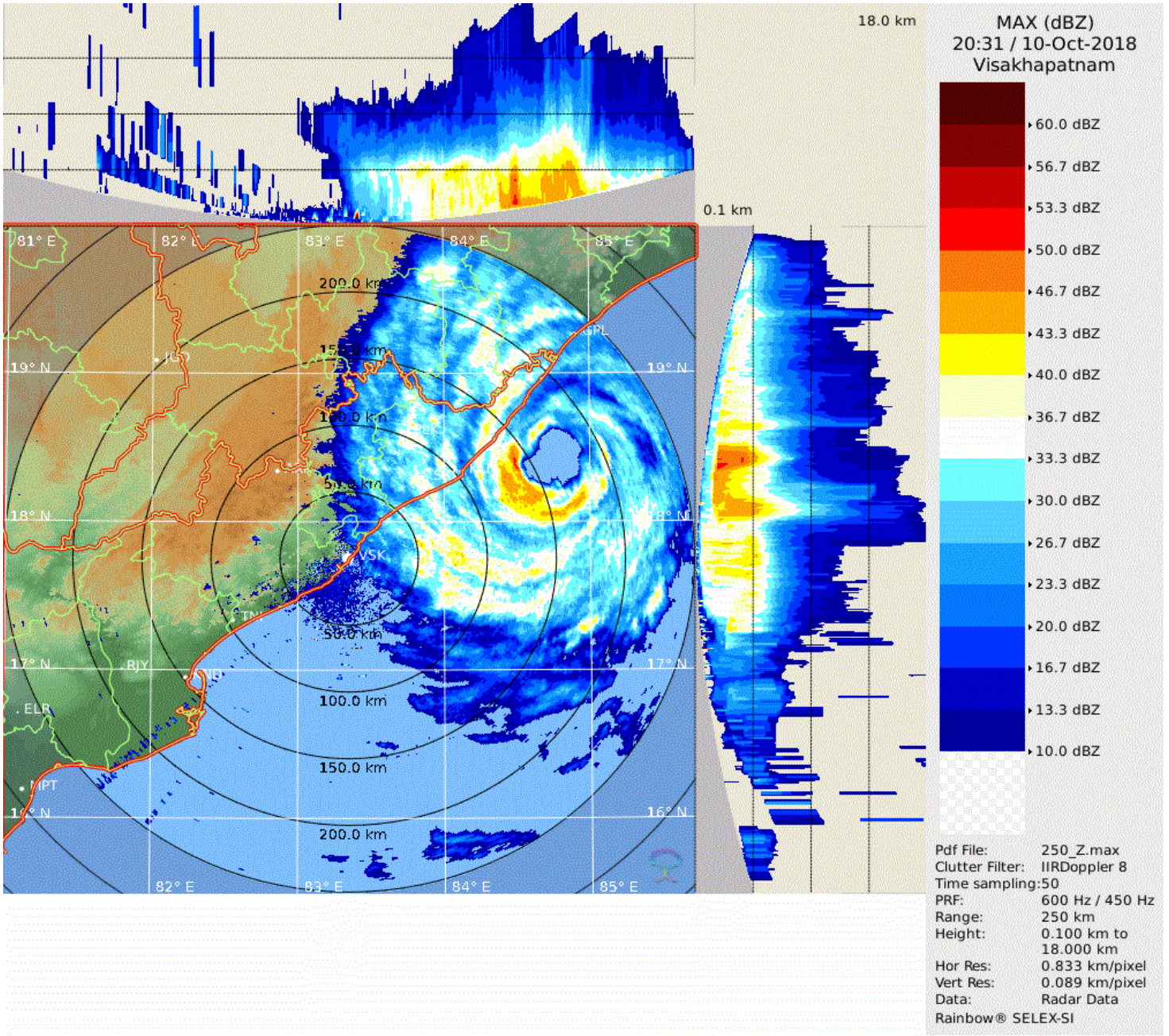
**OFFICER IN CHARGE
DWR VISAKHAPATNAM**

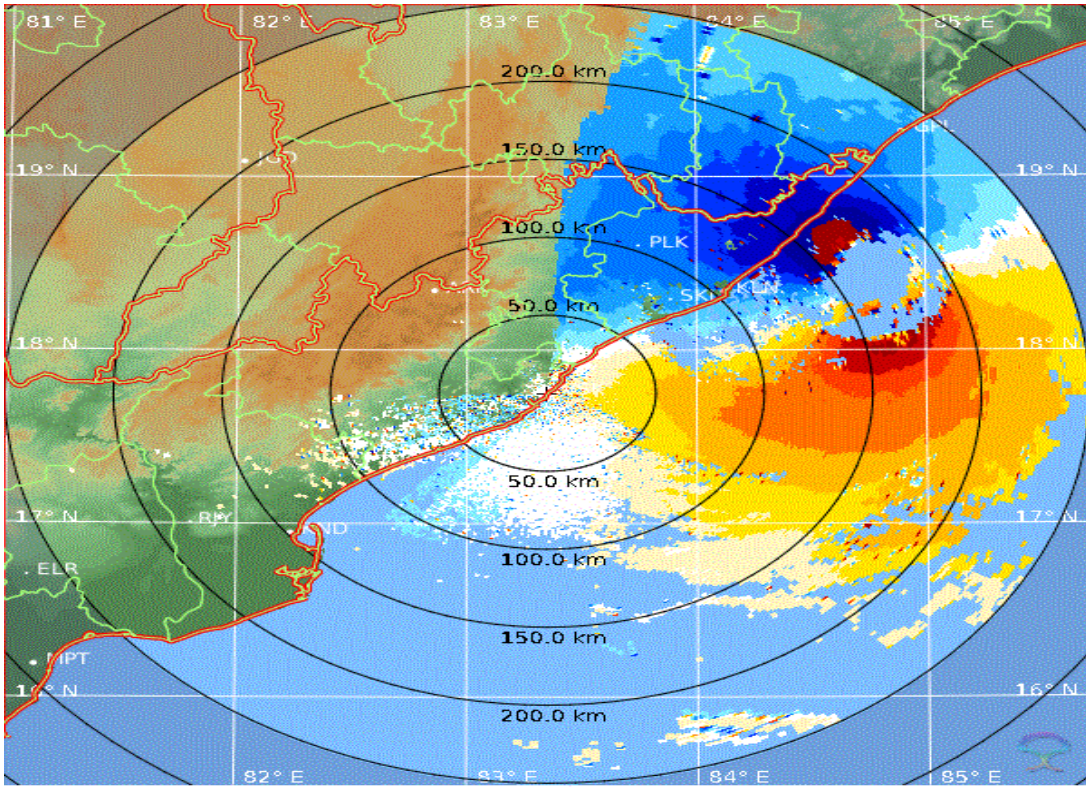


PPI (dBZ)
20:30 / 10-Oct-2018
Visakhapatnam

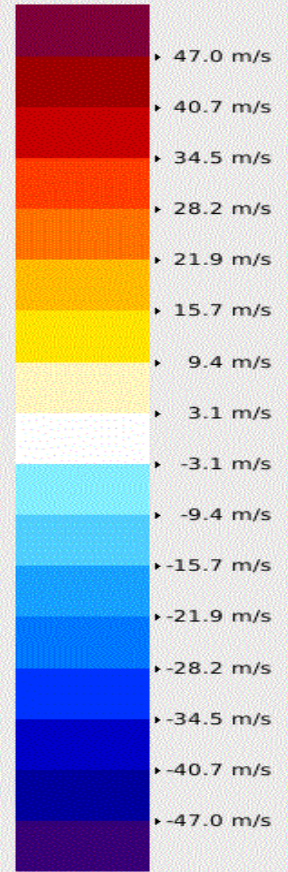
60.0 dBZ
56.7 dBZ
53.3 dBZ
50.0 dBZ
46.7 dBZ
43.3 dBZ
40.0 dBZ
36.7 dBZ
33.3 dBZ
30.0 dBZ
26.7 dBZ
23.3 dBZ
20.0 dBZ
16.7 dBZ
13.3 dBZ
10.0 dBZ

Pdf File: 500_PPZ.ppi
 Clutter Filter: IIRDoppler 10
 Time sampling: 16
 PRF: 300 Hz
 Range: 500 km
 Resolution: 1.429 km/pixel
 Elevation: 0.2 deg
 Data: Radar Data
 Rainbow® SELEX-SI





PPI (V)
20:31 / 10-Oct-2018
Visakhapatnam



Pdf File: 250_PPV.ppi
 Clutter Filter: IIRDoppler 8
 Time sampling: 50
 PRF: 600 Hz / 450 Hz
 Range: 250 km
 Resolution: 0.833 km/pixel
 Elevation: 0.2 deg
 Data: Radar Data
 Rainbow® SELEX-SI